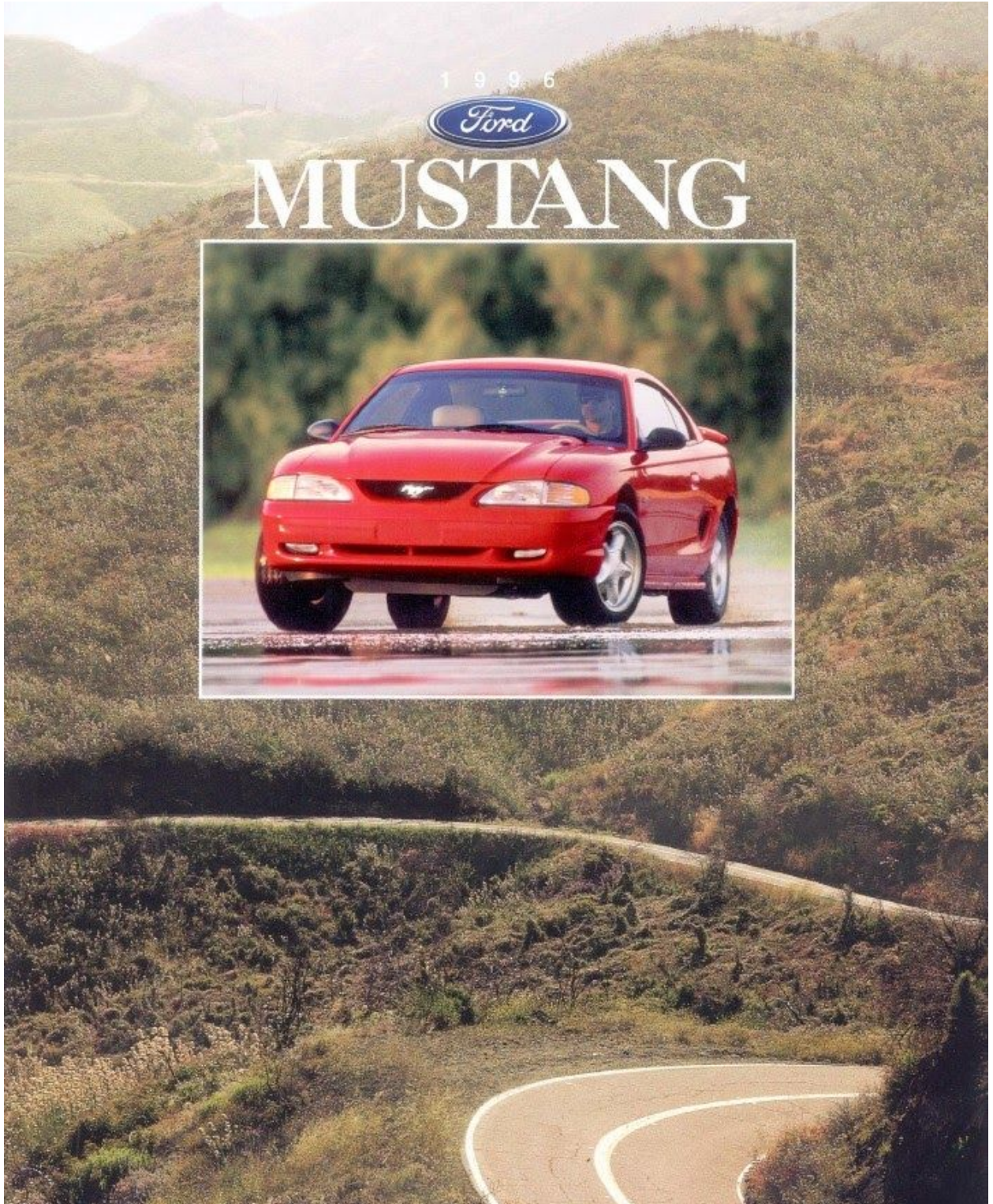
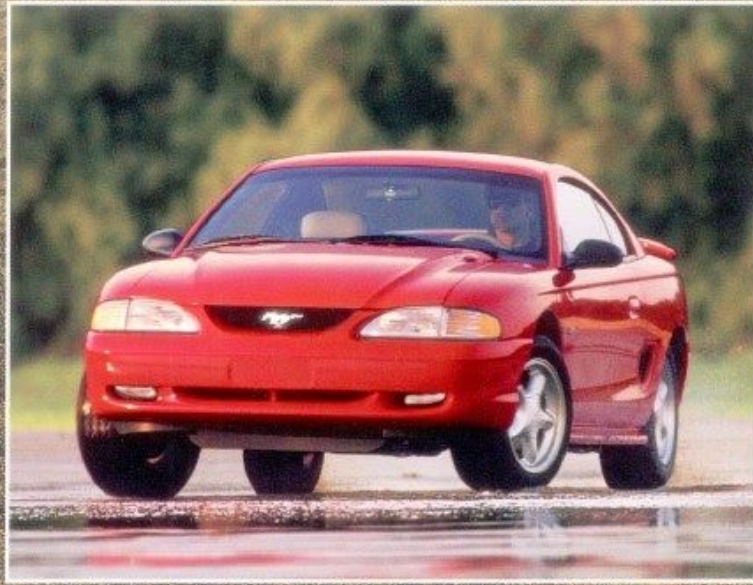
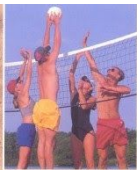


1 9 9 6



MUSTANG





Mustang. There's nothing else like it under the sun.



Think of great "driver's cars" and images of the legendary V-8 Mustangs naturally come to mind. This powerful tradition is carried on proudly in the 1996 Mustang GT. Under the hood is a newly available 4.6-liter SEFI V-8, with a single overhead cam design which contributes to increased horsepower per liter. The 4.6-liter V-8 is one of the most advanced engines in its class.

▲ Mustang GT Convertible in White Clearcoat Metallic shown with new-design taillamps. The Mustang Convertible is built as a convertible from the start, not as a modified coupe. It has other special features, too, including a glass rear window. Some equipment shown on these pages is optional.

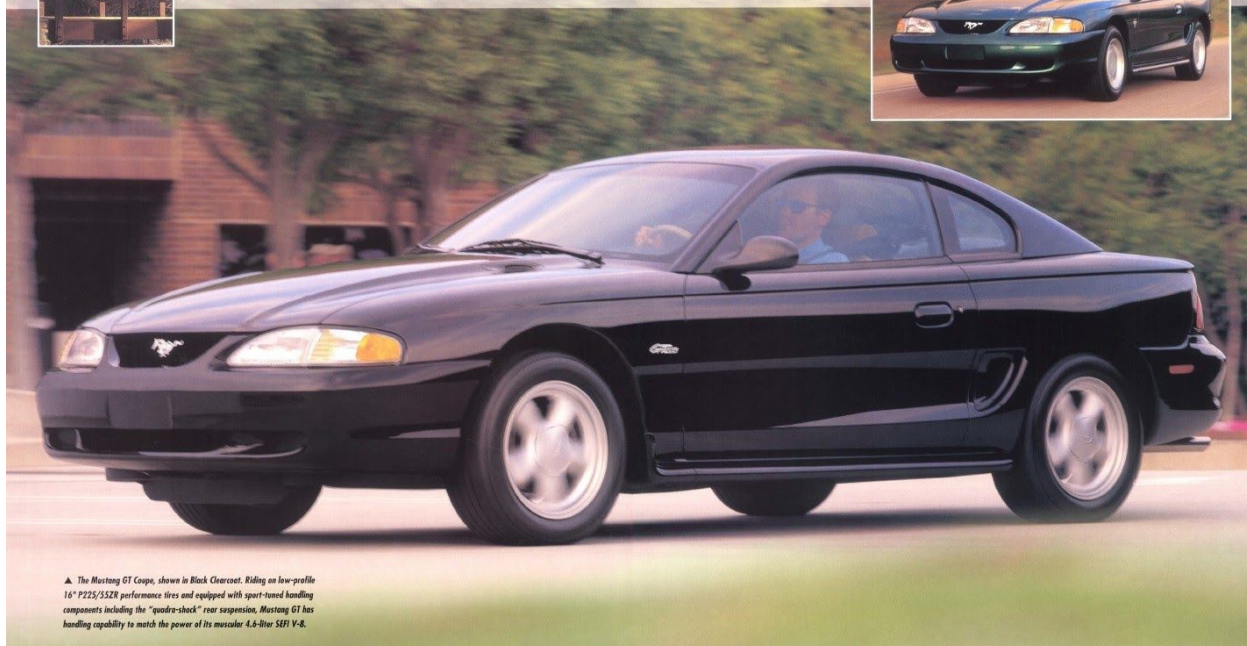
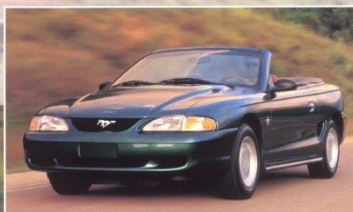


▲ Mustang GT Coupe in Deep Violet Clearcoat Metallic with optional 17" cast aluminum wheels and 245/45ZR17 tires.



The great Mustang tradition of style and power

► The Mustang Convertible in Pacific Green Clearcoat Metallic, powered by a responsive 3.8-liter SEFI V-6. Some equipment shown on these pages is optional.



▲ The Mustang GT Coupe, shown in Black Clearcoat. Riding on low-profile 16" P225/35ZR performance tires and equipped with sport-tuned handling components including the "quadra-shock" rear suspension, Mustang GT has handling capability to match the power of its muscular 4.6-liter SEFI V-8.



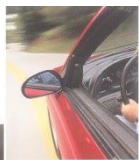
A cockpit to satisfy the demanding driving enthusiast

▲ All Mustangs come with a tilt steering wheel (leather-wrapped in GT convertible). Fold down either one or both of the rear seat backs if you're carrying long items (coupe only). The full center floor console includes an armrest, storage bin, cupholder, plus CD and cassette tape storage.

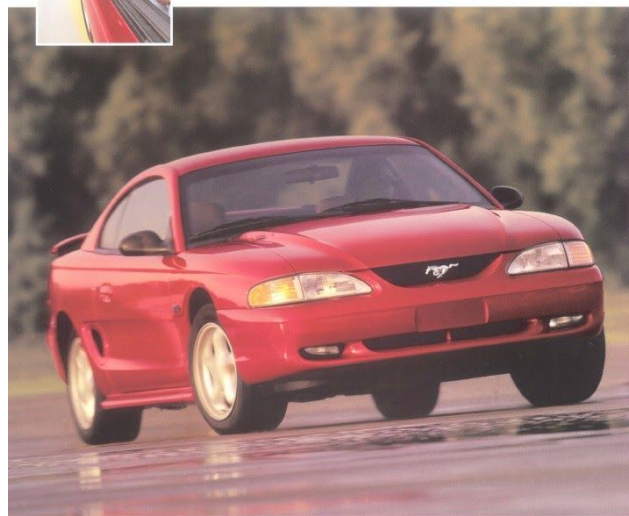


▲ Mustang's instrument cluster features the clarity of analog gauges: tachometer, voltmeter, engine temperature, fuel and oil pressure.

▲ Mustang's ergonomic instrumentation and seating are designed for driving in the '90s. Featured here is the Mustang GT interior in Black. The cloth sport bucket seats shown are included in Preferred Equipment Package 249A. Some equipment shown is optional.



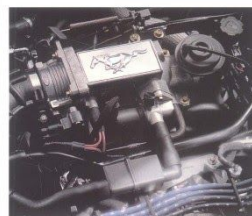
Engineered for performance and safety



▲ Mustang GT Coupe in Laser Red Tinted Clearcoat Metallic. Some equipment shown is optional.

Mustang has all the essential components for a great driving experience. Choose a Mustang with responsive V-6 performance and handling. Or feel the ultimate in Mustang power and agility in a GT with its high-output 4.6-liter V-8, 16" speed-rated tires, and sport-tuned "quadra-shock" rear suspension. For the absolute best in Mustang handling, take the wheel of a GT with 17" 245/45ZR tires, the lowest-profile design ever fitted to a Mustang.

► Four-wheel power disc brakes are standard equipment. A computer-controlled anti-lock brake system is optional.



▲ The newly available 4.6-liter SFI V-8 has a single overhead cam design that contributes to increased horsepower per liter. And it can go 100,000 miles without a scheduled tune-up under normal driving conditions with routine fluid and filter changes. What's more, the V-8-powered Mustang GT is now equipped with a standard passive anti-theft system. A perimeter anti-theft system is optional.



▲ The sport-tuned handling suspension in Mustang GT features tubular anti-sway stabilizers, nitrogen gas-pressurized hydraulic struts, plus the "quadra-shock" rear suspension system (horizontally mounted rear axle dampers shown) for directional stability and tight cornering capability.

▼ Dual air bags are standard. But always be sure to properly wear your safety belts.



Stereo sound systems



▲ An electronic AM/FM stereo radio is standard in every Mustang. All Preferred Equipment Packages include a cassette tape player, and Packages 243A and 249A also feature premium sound system components.



▲ The MACH 460 Sound System puts out 230 watts RMS (460 watts peak power) and has a 60-watt parametrically equalized amplifier for precise fine-tuning. Individual equalizers in coupe and convertible among its many features. The MACH 460 comes with AM stereo/FM stereo radio and cassette player. A compact disc player is available.



▲ The MiniDisc player, a dealer-installed option, is available with the electronic premium sound AM/FM stereo radio/cassette player or the MACH 460 Sound System. It combines the digital sound of CDs with the portability of cassettes.

Mustang features and colors



MUSTANG Preferred Equipment Package 241A

- Manual air conditioning
- AM/FM stereo/radio with cassette player

Preferred Equipment Package 241A

- Manual air conditioning
- Group 1: Power side windows, door locks and doorbell release (standard on convertibles)
- Group 2: Speed control, electronic AM/FM stereo with cassette player and premium sound system, 15" cast aluminum wheels
- Remote keyless/illuminated entry system
- Power driver's seat
- Dual illuminated visor mirrors (standard on convertibles)



MUSTANG GT Preferred Equipment Package 248A

- Manual air conditioning
- AM/FM stereo/radio with cassette player

Preferred Equipment Package 248A

- Manual air conditioning
- Group 1: Power side windows, door locks and doorbell release (standard on convertibles)
- Group 2: Speed control, electronic AM/FM stereo with cassette player and premium sound system, 16" cast aluminum wheels
- Power driver's seat
- Anti-lock brake system
- Group 3: Fog lamps, GT sport bucket seats, leather wrapped steering wheel, rear spoiler and dual illuminated visor mirrors (standard on convertibles)

Select Mustang Standard Features

	Mustang	GT
Dual electric remote-control mirrors (convex RH mirror)	•	•
Tinted glass—complete	•	•
Front fog lamps and single-wing rear spoiler (GT convertible)	•	•
Passive anti-theft system (anti-Vandalism only)	•	•
Driver and front passenger-side air bags	•	•
Reclining cloth front bucket seats	•	•
Tilt steering wheel (leather wrapped in GT convertible)	•	•
Digital clock in center of dash panel	•	•
Center floor console with armrest, storage bin, cupholder	•	•
Tachometer, voltmeter, temperature, fuel, oil pressure gauges	•	•
Interval windshield wipers	•	•
Auxiliary power outlet for small accessories	•	•
Courtesy lamps, dome with side door switches, engine compartment, glove box, front ashtray, luggage compartment	•	•
Sideline down rear seat back (lower), steel (convertible)	•	•

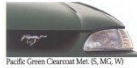
Mustang Options

	Mustang	GT
P—Package feature		
O—Optional, S—Standard		
Group 1*	—	P O P
Group 2*	—	P — P
Group 3†	—	— P —
Power driver's seat	O P O P	
Speed control	—	P O P
PCP-free air conditioning	P P P P	
Anti-lock brake system	O O O P	
Anti-theft system (perimeter)	—	O O O
Remote keyless/illuminated entry system	—	P O O
Electronic AM/FM stereo/cassette player	P — P —	
Electronic AM/FM stereo/cassette player and premium sound system	—	P O P
MAC21 400 Sound System with AM stereo/PM stereo and cassette player	—	O — O
Compact disc player	—	O O O
Leather seating surfaces—sport bucket seats	—	O — —
Leather seating surfaces—sport bucket seats (convertible only)	—	O O O
Front floor mats	—	O O O
Rear window defroster	O O O O	
4-speed automatic transmission	O O O O	
Engine block immersion heater	O O O O	
Optional parking	—	O O —
16" cast aluminum wheels	O P — —	O
17" cast aluminum wheels and 264K2217 tires	—	— O —

*See Preferred Equipment Package 241A and 248A listed at left. †See Preferred Equipment Package 248A listed at left. *Requires the electronic AM/FM stereo with cassette player and premium sound audio system or the MAC21 400 Sound System.



▲ Left to right: 15" wheel covers (standard on Mustang); 15" cast aluminum wheels (optional on Mustang); 16" cast aluminum wheels (standard on Mustang GT); and 17" cast aluminum wheels (optional on Mustang GT).



Interior Colors: Saddle (S), Medium Graphite (MG), Black (B), White (W)—convertible only
*Exclusive Mustang GT color.

Specifications

Powertrains	
Engine type	3.8-liter SEFI V-6 (Mustang); 4.6-liter SEFI V-6 (GT)
Fuel system	Sequential multi-port electronic fuel injection (SEFI)
Bore x stroke (in.)	3.81 x 3.40 (3.8 L); 3.60 x 3.60 (4.6 L)
Compression ratio	9.0:1 (3.8 L) and 10.0:1 (4.6 L)
Horsepower (SAE net)	150 @ 4,000 rpm (3.8 L); 215 @ 4,400 rpm (4.6 L)
Torque (SAE net lb.-ft.)	215 @ 2,750 rpm (3.8 L); 266 @ 3,500 rpm (4.6 L)
Exhaust system	Stainless steel, single (Mustang); dual (GT)
Transmission	5-speed manual override (std.); Electronic 4-speed automatic override (opt.)

Body/Chassis	
Drivetrain type	Rear-wheel drive; plus Traction-Lok axle with GT
Body type	Unstated
Front suspension	Modified MacPherson strut-type, tubular stabilizer bar; nitrogen gas-pressurized hydraulic shocks (higher-rate handling components in GT)
Rear suspension	4-bar link coil spring system, tubular stabilizer bar; nitrogen gas-pressurized hydraulic shocks (higher-rate handling components plus horizontally mounted axle dampers in GT)
Steering	Power rack-and-pinion, 14:1 on-center constant ratio
Brakes	Power 4-wheel disc (std.); Anti-lock brake system (opt.)
Tires	Std. P235/65R15 87T BSW all-season (Mustang); Std. P225/55ZR18 BSW all-season (GT); Opt. 265/45ZR17 BSW performance (GT)
Fuel capacity	16.4 gallons

Dimensions	Mustang	Mustang GT
	Coupe	Convertible
Wheelbase	101.3"	101.3"
Length	181.5"	181.5"
Height	53.2"	53.4"
Width	71.8"	71.8"
Front track	60.5"	60.5"
Rear track	59.2"	59.2"
Front head room	38.2"	38.1"
Rear head room	35.9"	35.9"
Front leg room	42.5"	42.5"
Rear leg room	30.3"	30.3"
Front shoulder room	51.0"	51.0"
Rear shoulder room	52.1"	52.1"
Passenger capacity	4	4

*15" with manual transmission and fuel-to-ice performance feature.

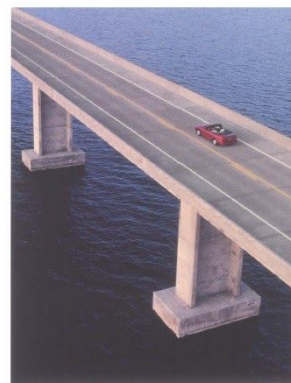
Product Changes and Options Availability

Following publication of the catalog, certain changes in standard equipment, options, prices and the like, or product delays, may have occurred which would not be included in these pages. Your Ford Dealer is your best source for up-to-date information.

Ford Division reserves the right to change product specifications at any time without incurring obligations.

Options shown or described are available at extra cost and may be offered only in combination with other options or subject to additional ordering requirements or limitations.

Ownership experience



ROADSIDE ASSISTANCE PROGRAM

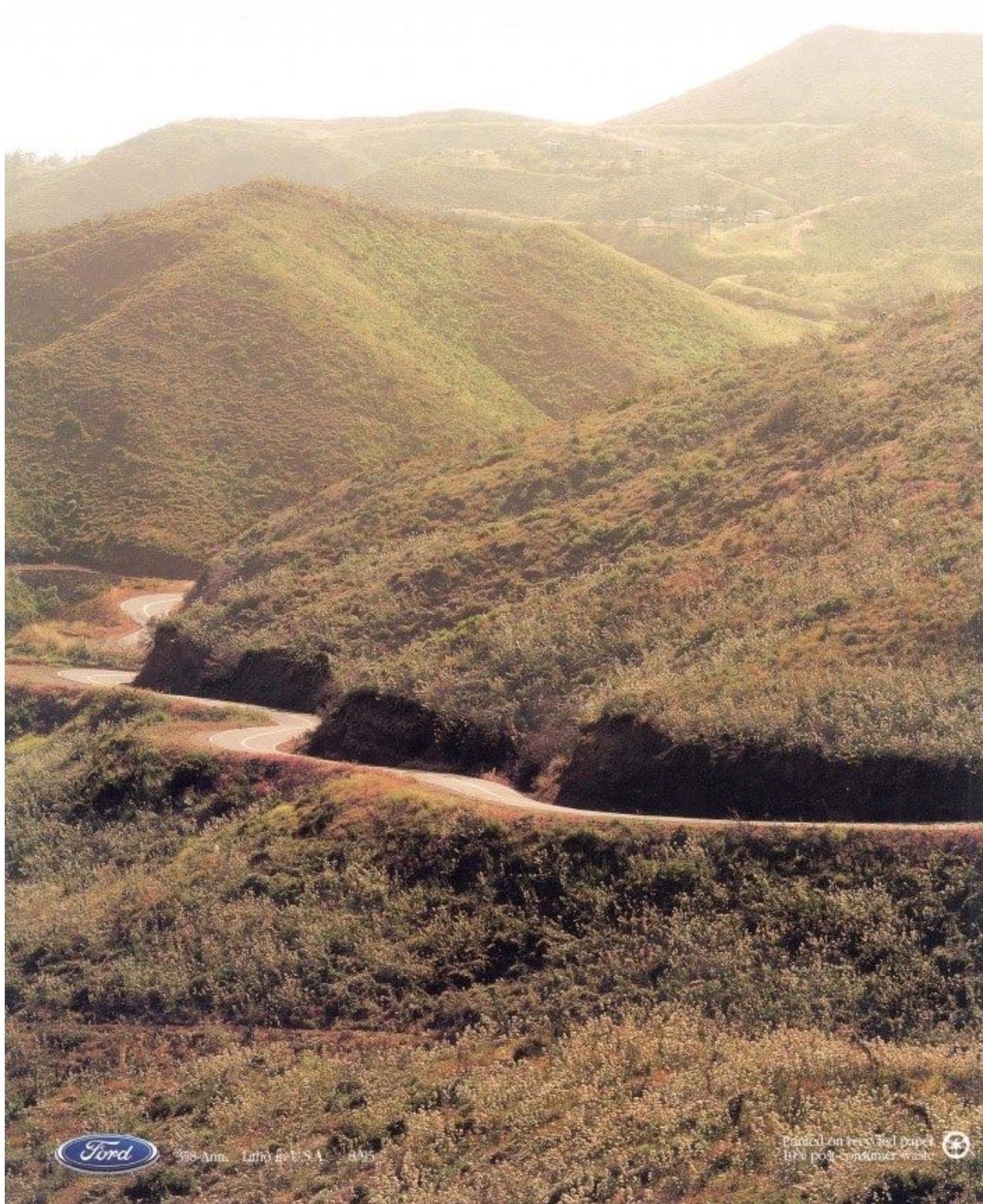
Every new Ford includes the assurance of a no-cost, 24-hour emergency Roadside Assistance Program provided during the 3-year/36,000-mile bumper-to-bumper warranty. Ask your dealer for complete details on this program which includes such services as fuel delivery, tire change, a jump start, or even help when you're locked out of your car.

Ford Credit offers a wide variety of financing and leasing programs to qualified buyers which can be arranged right at the dealership. Ask your dealer for the facts on these programs.

Optional Ford Extended Service Plans go beyond the basic 3-year/36,000-mile warranty. Ask your dealer for complete details on the optional plans and for a copy of the limited warranty.

DEALER-INSTALLED ACCESSORIES

Your Ford Dealer offers a variety of quality Ford-brand accessories that meet or exceed our strict specifications.



38 Anni - L'auto del S.A. - 1995

Stampato su carta riciclata
100% post-consumo

