

1 9 8 8

FORD MUSTANG



M U S T A N G I V S

FORD MUSTANG FOR 1988



Mustang LX Convertible shown in Oxford White. Some equipment shown may be optional. See the options list on pages 16-17.

Best-built American cars seven years running. For the past seven consecutive years, Ford quality has led all other American car companies. That's based on an average of owner-reported problems in a series of surveys of '81-'87 models designed and built in North America. It's the result of our commitment to product integrity. The 1988 Ford Mustang is one of the products of that total commitment. Find out for yourself in a test drive at your Ford Dealer soon. Mustang. Exciting to drive. Satisfying to own.



Contents	
Driver Control and Passenger Comfort	47
Mustang LX	89
Mustang GT	10-13
Ford Mustang Engineering	14-15
Features and Options	16-17
Safety and Owner Benefits	18-19

2

3

M U S T A N G I V S

FORD MUSTANG: DRIVER CONTROL AND PASSENGER COMFORT



Analogue gauges are larger and easier to read for excellent readability day or night.

A driver's ability to control a car is of the utmost importance. Aside from the obvious reasons of safety, there is the side benefit of driving enjoyment. The more inviting a car is to drive, the more fun you're going to have driving it. Those are the ideas behind the design and placement of Mustang's instruments and controls. Outstanding control. Outstanding enjoyment.



Rotary design climate control dials ease operation.



Control posts for running lights, defoggers and rear defogger are placed within clear view and easy reach.



The interval wiper/washer, high beam and flash-to-pass control is at your fingertips.

A driver's eye view of Mustang controls. Some equipment shown may be optional. See the options list on pages 16-17.

5



Mustang LX interior shown in Cabernet Red. Some equipment shown may be optional. See the options list on pages 16-17.

The climate control and entertainment systems are centered for an easily easy reach for both front passenger and driver.

The standard AM/FM stereo search radio may be deleted for credit. It electronically tunes to optimum reception, and the system includes four speakers.

You may also choose the electronic AM/FM stereo search radio with cassette tape player: the Premium Sound System, which includes a four-channel power amplifier and six speakers, or select a seven-band graphic equalizer that includes Premium Sound.

The center console features a driver-braked contour with offset parking brake handle.

The left and right rearview mirrors are both remote-controlled. Or, even greater convenience is provided by optional dual electric remote-control mirrors (standard in convertibles).

The approach to comfort in Mustang goes hand in hand with the approach to control. The front bucket seats are firm and supportive to help reduce fatigue and keep you alert on those long drives you may be inclined to take. Reclining seat backs provide good lower back support. Seat cushions feature high density foam pads over a spring steel base. Seat cushion side bolsters

offer good lateral support. In Mustang GT the front buckets feature adjustable side bolsters and under-thigh support plus a power adjustable lumbar support. The rear seat in hatchbacks has a split/fold feature for great versatility. Fold down one seat back to accommodate longer cargo, like skis for example, and still have room for one rear passenger. Fold both seat backs down for 30.0 cu. ft. of cargo volume.

FORD MUSTANG LX. THE FREE SPIRIT OF EXPRESSION

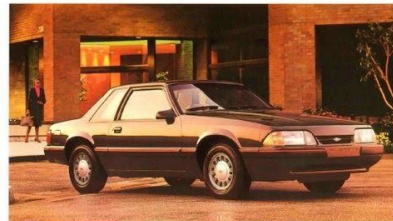


Ford Mustang is synonymous with excitement and freedom of expression. In LX, you have a personal car that makes you feel good about driving. The 2-door hatchback complements a go anywhere attitude with the versatility of extra room in the back whenever you need. Look confident in the well-equipped and sporty 2-door sedan. Or pop the top and get that special feeling you can only get in a convertible. Get behind the wheel of a Mustang soon and set your spirit free.

Ford Mustang LX 2-door hatchback shown in Cabernet Red. Equipped with the 5.0L engine option (see the description on page 16).



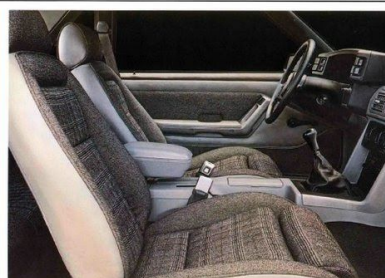
2-door hatchbacks feature split/fold rear seat backs for added versatility.



Mustang LX 2-door sedan shown in Dark Brown Metallic. Some equipment shown may be optional. See the options list on pages 16-17.

M U S T A N G
FORD MUSTANG GT:
THINK PERFORMANCE

1 9 8 8



Think performance. Because that's exactly what this car delivers. Aggressive styling. A taut handling suspension system. Road-grabbing Goodyear radials. And a High-Output V-8 with electronically controlled sequential multiple port fuel injection. The interior is designed to help you get the most out of those performance attributes. Controls are designed and placed for just that...control. Full analog instrumentation is standard and visible through the soft-feel, two-spoke, five position tilt steering wheel. Modified positioned pedals allow "heel-and-toe" downshifting and there is a left-side footrest/support for the driver during hard cornering. The front performance bucket seats (shown above) are fully adjustable including power lumbar supports.

Ford Mustang GT, striving for best-in-class performance. Available in 2-door hatchback or convertible.

Mustang GT Convertible shown in Medium Shadow Blue with Titanium lower accent. Some equipment shown may be optional. See the options list on pages 16-17.

10

11

M U S T A N G

1 9 8 8



Mustang GT is quick. No question about it. But it is also agile with a taut suspension, quick ratio power assisted rack and pinion steering and road-hugging performance radials. The awesome power of the 5.0L HO V-8 (rated at 225 horsepower at 4,200 rpm with 300 ft. lb. of torque at only 3,200 rpm) is transmitted to the road through the 5-speed manual transmission (or optional automatic overdrive transmission) and Traction-Lok rear axle.

The handling suspension system includes progressive rate

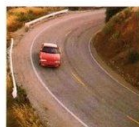
Above: Mustang GT in Dark Grey Metallic with Titanium lower accent. Some equipment shown may be optional. See the options list on pages 16-17.



Power rack and pinion steering with a quick (5:1 ratio, gas pressurized front struts...



...a gas pressurized rear quadra shock suspension system, front and rear stabilizer bars and...



16 inch Goodyear Eagle performance tires help Mustang react quickly...



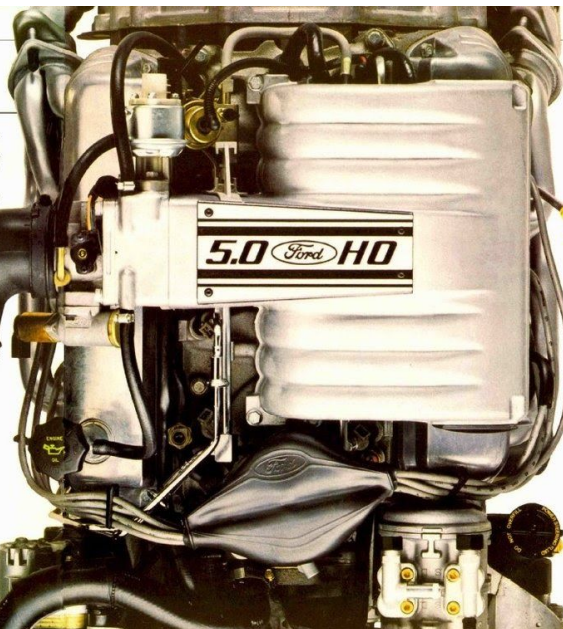
...and respond predictably to your commands.

springs and front and rear stabilizer bars. The front modified MacPherson struts are gas pressurized and there's a Quadra-shock set-up in the rear. Quadra-shocks consist of vertically-mounted gas-pressurized shocks and horizontally-mounted axle dampers. Traction is supplied by P225/60VR15 unidirectional Goodyear Eagle radials. The rack and pinion steering features a quick 15:1 steering gear ratio.

Wrap all that in a Mustang GT's bold, dynamic shape and you have the makings for pure performance and serious fun. For more on Mustang GT standard features, see page 17.

12

13



The 5.0L V-8 used in the GT and available with the 5.0L engine option in LX is an overhead valve design with modified wedge combustion chambers. The block and head are cast iron. The intake manifold is aluminum and the exhaust headers are tuned stainless steel. Other premium performance components: induction hardened steel camshaft; low friction roller tappets; double roller timing chain and sequentially timed multiple port electronic fuel injection.

D E F

Illustrated Options: (A) Electronic AM/FM stereo, search radio with cassette tape

player and digital clock (B) Air conditioning (C) T-RooF (includes soft vinyl storage cases) (D) Styled road wheels (E) Wire-style wheel covers (F) Cast aluminum wheels (available and included only with the 5.0L V-8 engine package)

Options lasting standard features, Option Groups and individual options are listed on the right. By selecting the individual options you want, compare your choices with the other options. You will find that most of the equipment you want has already been included in a group package. Advantage Option Groups save you money, based on the options purchased separately. Equipment Packages, Option Groups and individual options are available for the 1994 model year. To change during the year

Some options may be subject to ordering restrictions. Your Ford Dealer can advise you of current status.

5.8 liter V-8 engine. You can order this engine option for your L7 engine option for your L7 2-door sedan, hatchback or station wagon. For more performance, equipment that is standard with GT. You get the 5.0L EFI 160-hp engine. The 5.0L EFI suspension system components, 15.1 steering rack, heavy-duty battery. Good handling, 5.0L, fender flaring, and unique cast wheels. (See text) To the left, visit us at

MUSTANG SPECIAL VALUE



The Mustang LX pictured above, also includes the Special Value Group -- at no extra charge. All you do is equip your LX with the standard 2.3L engine. The

Special Value Group includes these items:

- ☐ Power Lock Group includes door locks, remote locking fuel door and trunk/hatch release
- ☐ Electronic AM/FM stereo search radio with cassette tape player
- ☐ Dual electric remote control mirrors
- ☐ Speed control
- ☐ Styled road wheels

• Standard equipment	LT	GT
2.0L EFI 160-C 4 cylinder engine and 5 speed manual overdrive transmission		
5.0L EFI V-8 engine package and 5 speed manual overdrive transmission		
Heavy-Duty maintenance free battery		
Power rack and pinion steering (1)		
Power front disc/rear drum brakes		
Handling Suspension Package (2)		
Front stabilizer bar		
Rear stabilizer bar		
P165/75R14 BSW steel-belted radials		

	LX 2400	GT 2400
Special Value Group**		
Power Lock Group		•
Electronic AM/FM stereo-search radio with cassette tape player	•	•
Speed controls	•	•
Quilt electric remote control mirrors	•	•
Styled road wheels	•	•

*Includes all in-price change on Mustang LX models equipped with 2.3L engine. Styled road wheels included with LX with 3.0L engine package.

Custom Equipment Group:	■	■
Air conditioning		
Tinted glass		
Dual electric remote-control mirrors		
Dual illuminated visor mirrors		
Tilt steering wheel (standard on GT)		

■ = Optional equipment	■ = Standard equipment		
PERFORMANCE		LX	GT
2.3L EFI IHC 4-cylinder engine and automatic overdrive (A4LD) transmission	■		
5.0L EFI HO V-8 engine package and 5-speed manual overdrive transmission	■		

5.0. EP100 V10 engine package and automatic transmission (A102) transmission			
Handling Suspension (2)			
1995-1996 (2) seat-belt cutoff			
EXTERIOR			
Plg up top/side roof (2)			
Exhaust (2)			
Flammable amber colored treatment (on vinyl equipment with leather parts)			
Body/mold molding repair (2)			
Cast aluminum wheels (2)			
Wash vinyl wheel covers			
INTERIOR			
Articulated sports seats with leather seating surfaces, adjustable knee support, and side bolsters, and power inflatable neck support (2)			
Graphic upholstery (includes Premium Sound)			
Premium Sound System (3)			
18 speakers (2)			
Power window defogger (1)			
Air conditioner (3) (not glass recommended)			
Tinted glass, complete			
Power front and rear windows			

	Reputa Rio Natural Red	Reputa Rio Natural Grey	Reputa Rio Natural Grey Algae	Exterior Colors
	X	X	X	Black
	X	X	X	Dark Grey Metallic
X	X	X		Light Grey
	X	X		Scarlet Red
	X	X		Cobalt Red
X	X			Medium Shadow Blue Metallic
			X	Tropic Yellow
X	X			Deep Shadow Blue Metallic
				Bright Regatta Blue Metallic
			X	Sand Beige
				Dark Brown Metallic
X	X	X		Gold/White

Some of these paint and trim colors are shown in this catalog. On the printed page, of course, colors are at best only representative of the originals. Your Ford Dealer can show you actual sample paint colors and trim materials.



Dark Grey Metallic



Light Grey

Scarlet Red Sand Beige



Cabernet Red Dark Brown

Metallic

Medium Shadow
Blue Metallic

SAFETY AND OWNER BENEFITS

☐ Plastic
☐ Two-sided galvanneal steel
☐ One-sided galvanneal steel
☐ Urethane lower bodyside protection
☐ Quinacryl protection wax
☐ PVC coating (underside only)

Mustang 6-year/100,000-mile corrosion protection

Mustang corrosion warranty coverage for body panel rust-through is for 6 years or 100,000 miles, whichever comes first. See your Ford Dealer for details and a copy of this limited warranty.

The optional Tin Guard, available at your Ford Dealer.



Ford LifeGuard Design

Vehicle operation

- Split service hydraulic brake system with alert light
- Corrosion-resistant brake lines
- Flash-to-pass headlamps
- Turn indicator lever with lane-changing signal feature
- Hazard flasher
- Backup lights
- Side marker lights
- Parking lights coupled with headlamps
- High mount brake lamp
- Variable-speed windshield wipers
- Windshield wipers
- Outside rearview mirrors
- Glare-reduced instrument panel, windshield wiper arms and windshield pillars
- Uniform transmission shift quadrant

Occupant protection

- Safety-designed front end structure (except convertibles)
- Safety-designed door hinges and double yoke safety door latches
- Integral lap and shoulder belts with automatic retractors for occupants of front seats
- Safety belt fastening reminder light and buzzer for the driver's seat
- Lap belts with retractors for rear seat

- Energy-absorbing steering column
- Energy-absorbing armrests and safety-designed door handles
- Energy-absorbing instrument panel with padding
- Energy-absorbing front seat back tops
- Self-locking seat back latches
- Head restraints for front seat occupants
- Safety glove box latch
- Inside rearview mirror
- Impact absorbing laminated safety glass windshield
- Flame-resistant interior materials
- Safety-designed radio control knobs and push buttons

Anti-theft

- Locking steering column with key chime (with push-button key release)
- Visible vehicle identification number

6-year/60,000-mile powertrain warranty

Ford's powertrain warranty covers all 1988 cars for 6 years/60,000 miles, whichever comes first. This limited warranty covers major powertrain components. Certain restrictions and deductible apply. Ask to see a copy of this warranty when you visit your Ford Dealer.

5-mile-per-hour bumpers

Bumper systems on Ford Mustang are designed to protect lamps, cooling system, exhaust and other body components in the event of a minor impact. While some manufacturers equip their cars with bumpers that just meet the 2½-mph federal standard, Ford equips Mustang and every other car it makes with bumpers designed to absorb impacts of 5 mph.

Scheduled maintenance

Here are some examples of scheduled maintenance intervals for the 1988 Mustang. For complete maintenance recommendations, refer to the Maintenance Schedule and Record Log.

Engine oil change	every 3,000 miles or 3 months
Spark plug change	every 30,000 miles
Air filter replacement	every 30,000 miles
Engine coolant replacement	every 30,000 miles or 3 years

Measurements

	Mustang	Mustang LX
Wheelbase	105.3"	105.3"
Length	178.5"	178.5"
Height	58.1"	58.1"
Width	68.1"	68.1"
Trunk depth	22.5"	22.5"
Trunk width	33.5"	33.5"
Trunk height	18.5"	18.5"
Trunk weight (lb.)	273.0 (1988/1989)	273.0 (1988/1989)
Powertrain capacity	4	4

Based on these specifications, Mustang is a Class 1 car.



Participating Ford Dealers offer the Free Lifetime Service Guarantee, which guarantees their work on your Ford vehicle for as long as you own it. This means that the covered repair is paid for once — and never again. If it ever has to be fixed again the repairing dealer will fix it free. Free parts. Free labor. Even if the vehicle is kept a lifetime. It doesn't matter where it was purchased or whether it was new or used, the work is still covered by the repairing dealer. Ask to see this limited warranty when you visit your participating Ford Dealer.



Optional Ford Extended Service Plan

Optional Ford Extended Service Plan covers major components on new Ford cars and light trucks for longer than the vehicle's basic warranty. The limited warranty cost is so moderate for the protection you get that it could pay for itself the first time you need it. Your Ford Dealer has full details.

Motorcraft

QUALITY REPLACEMENT PARTS FROM FORD

Genuine Ford and Motorcraft original equipment replacement parts meet the same high standards as those installed in production.



Ford Motor Credit Company is interested in helping to fill the transportation needs of every qualified buyer of a Ford product. A participating dealer can arrange financing terms or a Red Carpet Lease[®] tailored to your circumstances. Ford Credit has offices conveniently located throughout the United States.

Ford-paid repair programs after the warranty period

Sometimes Ford Motor Company offers adjustment programs to pay all or part of the cost of certain repairs. These programs are intended to assist owners and are in addition to the warranty or to required recalls.

Technical service bulletins

All vehicles need repairs during their lifetime. Sometimes Ford issues technical service bulletins (TSBs) and easy-to-read explanations describing unusual engine or transmission conditions which may lead to costly repairs. The recommended repairs, and new repair procedures. Often a repair now can prevent a more serious repair later.

For more information...

Ask Ford Motor Company or your Ford or Lincoln, Mercury Dealer about Ford's paid repair programs and/or TSBs relating to your vehicle. To get copies of materials for your vehicle or the vehicle of interest to you, call Ford toll free at 1-800-241-3073. Alaska/Hawaii call 1-800-241-3711 and in Georgia call 1-800-282-0559. Or write Ford at:

Ford Customer Information System
Post Office Box 95427
Atlanta, Georgia 30347
We'll need your name and address, year, make, model and vehicle identification number, as well as engine size.

Options availability

Options shown or described in this catalog are available at extra cost and may be offered only in combination with other options or subject to additional ordering requirements or limitations.

Product changes

Ford Division reserves the right to change product specifications at any time without incurring obligations.

"Ask your Ford Dealer"

Following publication of this catalog, certain changes in standard equipment, options, prices and the like, or product delays, may have occurred which would not be included in these pages. Your Ford Dealer is your best source for up-to-date information.

Buy or lease a new Ford Mustang

M U S T A N G

